



## William Penn Newsletter 6<sup>th</sup> May 2015

### Intimate Care Policy Update and Return Slip

The Governing Body has recently updated the Intimate Care Policy. This policy covers the ways in which the school will look after your child if they need assistance as part of an ongoing medical need or in the case of an unexpected incident. In order to be able to do this in accordance with parental wishes, we request that parents return a form for each child currently in school. The policy and return slip will accompany this newsletter and will also be available on the school website.

### Pirate Day

Yo Ho Ho!!!

On Thursday 30<sup>th</sup> April, William Penn Primary school, held a Pirate Day for children in Reception and KS1.

This linked to their topic, 'By the Seaside'.

All the children came dressed as Pirates, made grog, iced biscuits, made treasure maps, went on a treasure hunt, sang sea shanties and more! A lot of pirate fun was had by all.



### Kinder Living Show Primary School Competition on 16th May

The following competition is open to all children and Pedro's Green Club will also be submitting an entry.

The competition is to create a **collage** to explain one (or all) of the following concepts:

Recycling Eco-friendly

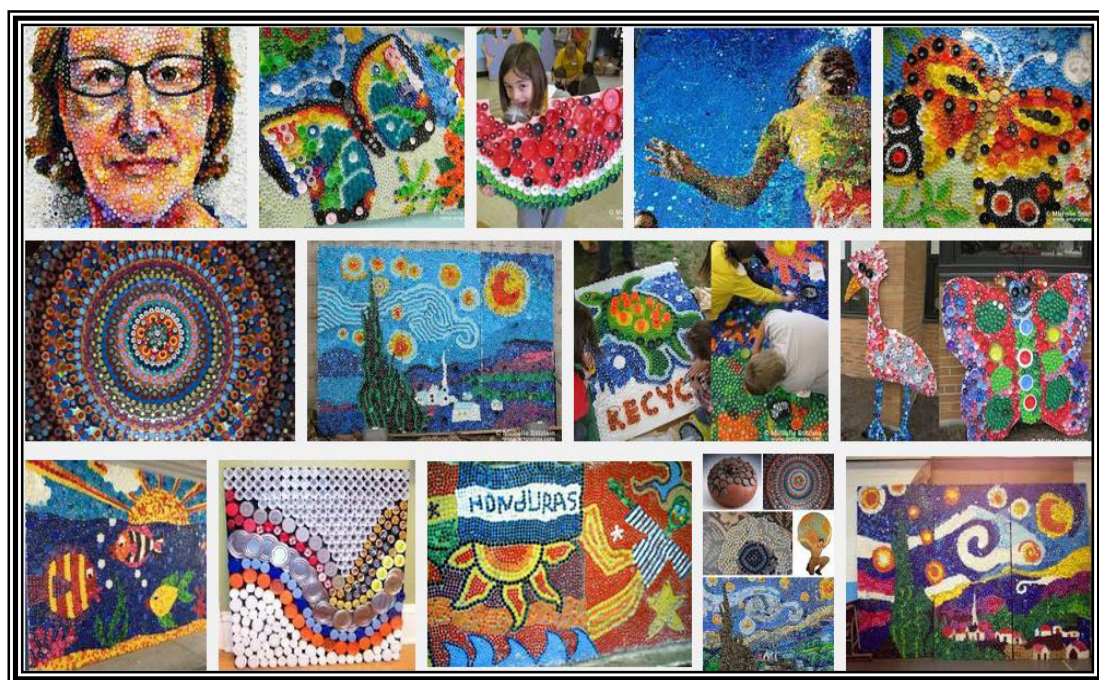
Energy saving

The collage should include materials that might otherwise be thrown away – left over paper, fabrics and so on.

More information about the show here

<http://www.kinderlivingshow.co.uk/schools/>

Regarding Pedro's Green Club: on 7th May children are going to make a collage to enter into the Kinder Living Show Primary School Competition. As Mrs Cort has thousands of plastic bottle tops, we will use





those materials. Perhaps members can have a think and bring any ideas to the club on Thursday!

### Pupil Achievements

Congratulations to Sophie Lawrence who has passed her grade 2 piano exam with Merit. Well done to Jessica Lutman who has achieved a Distinction in her Primary ballet exam. If you have any pupil achievements that you would like mentioned in the newsletter, please e-mail the **office**:

[office@williampenn.w-sussex.sch.uk](mailto:office@williampenn.w-sussex.sch.uk)

